

ADVANCED | **COMPLETE**

UNIVERGE BLUE ENGAGE COMPLETE

Deliver the ultimate customer experience with a full-featured multi-channel Contact Center solution.

For sophisticated customer experience needs, UNIVERGE BLUE ENGAGE COMPLETE delivers exceptional performance while improving customer interactions for businesses of all sizes and helps differentiate your company from the competition.

FEATURE HIGHLIGHTS INCLUDE:

- Custom integrations
- Built-in multi-channel (SMS, WhatsApp, Chat, Email)
- Schedule Manager
- Dynamic Notifications
- AI Sentiment Analysis powered by UNIVERGE BLUE PULSE

FOR THE ULTIMATE CUSTOMER EXPERIENCE

Communication Convenience

Meet customers where they are, via the communication modes they prefer. UNIVERGE BLUE ENGAGE COMPLETE includes voice, SMS, WhatsApp, Chat, and Email queues right out of the gate.

Outreach at Scale

Drive more engagement with less effort with Dynamic Notifications. From reminders to promotions, send automated outbound notifications using voice, SMS, and email and allow customers to respond.

Better Interactions with Personalization and Insights

Personalize and streamline customer interactions with CRM integrations. Tie into workforce management or other data systems for better resource planning and insights.

Greater Visibility and Planning

Balance staff resources available against the work to be done with Schedule Manager. Use the Evaluator Tool with artificial intelligence to identify, review, evaluate, and provide feedback on recorded customer interactions.

UNIVERGE BLUE ENGAGE COMPLETE CONTACT CENTER INCLUDES



FOR CUSTOMERS

- › Voice, Chat, Email, SMS, and WhatsApp Queues
- › Speech Recognition Integration
- › Smart Greetings (announces # of callers in queue, estimated waiting time)
- › Automatically connects callers to the next available agent. Places callers on hold when all agents are busy with calls
- › Routes Calls, Chat, Emails SMS, and WhatsApp to
 - i) Organized departments such as sales, or support, ii) Agent based on specific skillset or geographical preference

FOR FRONTLINE USERS

- › Access to integrated employee collaboration and advanced call handling within UNIVERGE BLUE CONNECT
- › Desktop & Web Application – single pane of glass for Voice, Chat, Email, SMS, and WhatsApp queues
- › Structured, consistent feedback via Evaluator
- › Screen recording
- › Outbound Voice capabilities & outbound dialer (power dialing add-on)
- › Queued Callbacks and Voicemails make for structured, efficient follow-ups
- › Custom Agent Status

FOR SUPERVISORS

- › Evaluator with artificial intelligence empowers supervisors to review, score, and provide feedback on customer interactions
- › Desktop & Web Application
- › Enhanced supervisor calling abilities: monitor, whisper, and barge
- › Supervisor Reporting: Agent/Group Activity Reporting; Historical Reporting; Call Queue and Active Call Reports; Report Scheduling
- › AI-powered sentiment analysis with tagging¹

1. ADVANCED subscribers can purchase transcription time for sentiment analysis in 5-hour increments. 2. Requires Professional Services. 3. Conditions apply; ask for details.

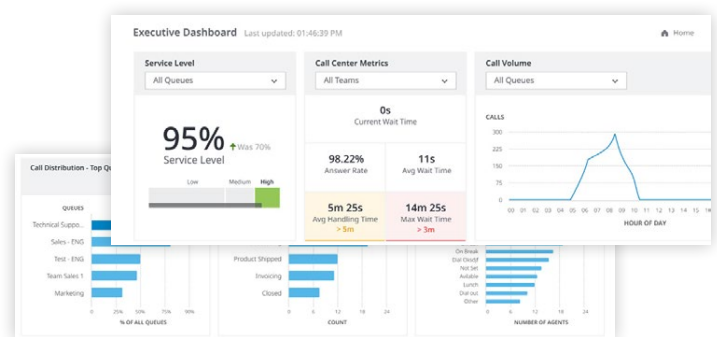
NEC and the NEC logo are trademarks or registered trademarks of NEC Corporation that may be registered in Japan and other jurisdictions. All trademarks identified with © or TM are registered trademarks or trademarks of their respective owners. Models may vary for each country, and due to continuous improvements this specification is subject to change without notice. Please refer to your local NEC representative(s) for further details.

Americas (U.S., Canada, Latin America)
NEC Corporation of America
www.necam.com

NEC © Copyright 2023. All Rights Reserved.

FOR ADMINISTRATORS

- › Dynamic Notifications for outreach campaigns via Voice, Email, SMS, and WhatsApp
- › Schedule Manager helps optimize your workforce and balance staff resources against demand
- › Intelligent call routing using Interactive voice Response (IVR) gets customers to the right agent or information using their voice
- › Custom CRM Integration²
- › Custom WFM Integration²
- › Custom EHR Integrations²
- › Custom IVR Integrations & Self-service applications (DB Data Dips, Intelligent Routing, Payment IVRs etc.)²
- › Real-time calling statistics dashboard for desktop or wallboard display
- › Routes calls according to Administrator specifications: Last Agent, Preferred Agent, etc.
- › Outbound Dialer with voice & blended channel queues (add-on)
- › Real-Time Customizable Threshold Alerts
- › Emergency Queue Bulletins
- › Post-Call Surveys
- › Text-To-Speech
- › Call Scripting
- › Elastic Demand Support³, up to 50%



For further information please contact NEC Corporation of America or:



Professional Telecommunications Services, Inc.
2119 Beechmont Avenue Cincinnati, Ohio 45230
Phone: (513) 232 7700, www.ptscinti.com